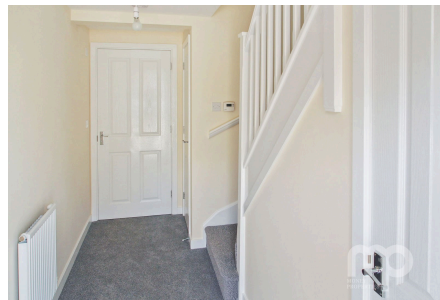


Jeckyll Road, Wymondham, Norfolk.

Offers In Region Of £165,000

 1  1  0



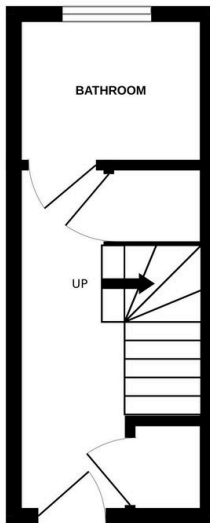
Moneyproperties are delighted to be marketing this one-bedroom coach house located on a popular residential development within ease of access to the town centre, local train station and the A11 for commuting towards Norwich and Cambridge. Set across two floors this well-presented property is an ideal purchase for first-time buyers, couples or as an investment property. The accommodation comprises of an entrance hall and bathroom to the ground floor with the 17ft living room, bedroom and kitchen being located on the 1st floor. To the outside the property benefits from allocated parking to the rear and is being offered with no-onward chain.

Tenure: Freehold EPC: C Council Tax: A

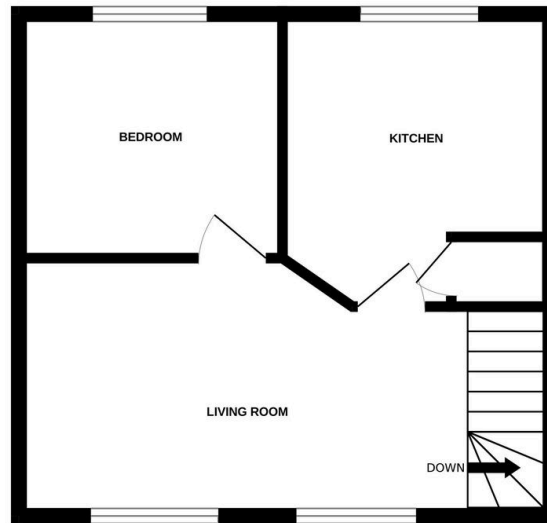
Key Features

- One bedroom coach house with parking to the rear
- Property on two levels ground floor bathroom first floor bedroom, kitchen and living room
- Easy access to main A11 for those commuting to Norwich and Cambridge
- Minutes from the town centre with all its amenities and twenty minutes from Norwich City centre
- No forward chain quick sale possible
- Offering approximately 550 sq ft of living space
- Perfect for a single person or couple, investor or first time buyer
- Close to the towns railway station with regular services to Norwich and Cambridge
- Must view to fully appreciate
- See our full online listing for further details including flood risk, broadband speed and other material information.

GROUND FLOOR



1ST FLOOR



Whilst every attempt has been made to ensure the accuracy of the floorplan contained here, measurements of doors, windows, rooms and any other items are approximate and no responsibility is taken for any error, omission or mis-statement. This plan is for illustrative purposes only and should be used as such by any prospective purchaser. The services, systems and appliances shown have not been tested and no guarantee as to their operability or efficiency can be given.
Made with Metropix ©2024